



TECHNICAL INFORMATION

BEST - GUTTER II



CAST IRON GRILLE



Layout dimensions

name	layout dimensions (mm)			quantity (pcs)		weight (kg)			max. tonnage up to 24 tonnes	
	height	length	width	layer	pallet	pcs	pallet	pallet included	number of pallets	m ²
BEST GUTTER II	70/100	280	210	30	60	9.5	570	600	24	1440

Additional assortment

name	layout dimensions (mm)			weight (kg)	theoretical permeability (m ² /hr)	grille area (mm ²)	area of grooves (mm ²)	permeable grille area
	height	length	width	pcs				
CAST IRON GRILLE	70/100	280/440	210/370	25.5	9	47616	22144	46.50 %

We are holders of the Gold Certificate for complete certification according to ISO 9001, ISO 14001, ISO 50001, ISO 45001. Our products are manufactured and inspected pursuant to European harmonized standards.

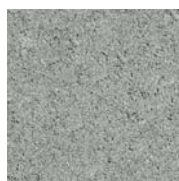
name	product height	production standard	maximum deviation from declared production dimensions		bending tensile strength	ČSN 73 1326, weather resistance, method A
			width and height	length		
BEST GUTTER II	80 mm	PN BEST-23-2014	±3 % (min. 3 mm, max. 5 mm)	max. ±1 %	≥ 4.0 MPa	≤ 1.0 kg/m ² after 100 cycles

EXPLANATIONS OF PICTOGRAMS



Surface basic

SURFACE FINISHES AND COLOURS



NATURAL

surface	characteristics	colour
STANDARD	standard surface with natural aggregate roughness corresponding to the visible layer of concrete paving	natural

GENERAL INFORMATION

Two-layer vibrated drainage element with high strength, frost resistance, surface resistance to water and chemical de-icing agents. The curb has low abrasion and good adhesion properties. BEST concrete elements are permanently impregnated against contamination.

The minimum shipping quantity is 1 piece. The goods are loaded on marked pallets BEST (30 kg) or BEST large (38 kg) according to the production capacity of individual plants.

When laying, it is important to follow the correct procedure according to the instructions for use (www.best.cz).

Use: The CAST IRON GRILLE is designed to follow the BEST GUTTER II.

