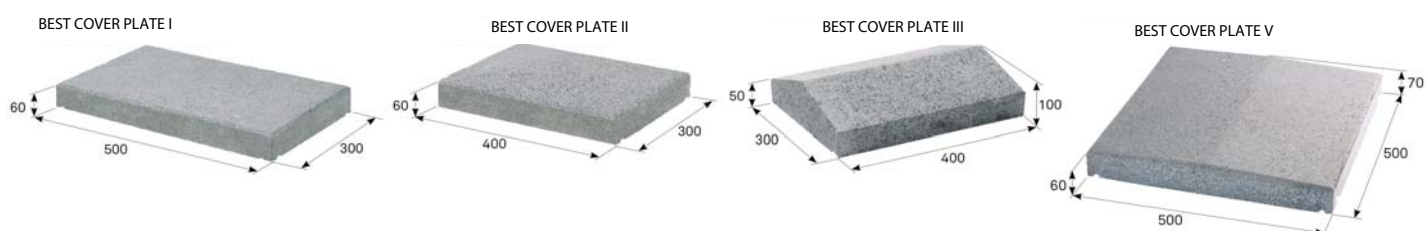




## TECHNICAL INFORMATION



name	layout dimensions (mm)			consumption	quantity (pcs)		weight (kg)			max. tonnage up to 24 tonnes	
	height	wall thickness	width	pcs/lm	layer	pallet	pcs	pallet	incl. pallet	number of pallets	pcs
BEST COVER PLATE I	60	500	300	2.0	6	60	20.5	1230	1260	19	1140
BEST COVER PLATE II	60	400	300	2.5	6	78	16.0	1248	1278	18	1404
BEST COVER PLATE III	50/100	400	300	2.5	24	24	19.0	456	486	24	576
BEST COVER PLATE V	60/70	500	500	2	2	20	34.0	680	710	24	480

We are holders of the Gold Certificate for complete certification according to ISO 9001, ISO 14001, ISO 50001, ISO 45001. Our products are manufactured and inspected pursuant to European harmonized standards.

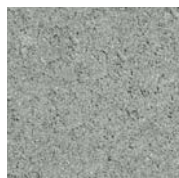
production standard	maximum deviation from declared production dimensions		bending tensile strength	capillary absorptivity	frost resistance ČSN 73 1322
	width and length	height			
ČSN EN 771-3+A1	+3/-5 mm	+3/-5 mm	≥ 4 MPa	not more than 7 g/m <sup>2</sup> s	50 cycles

## EXPLANATIONS OF PICTOGRAMS



Surface basic

## SURFACE FINISHES AND COLOURS



NATURAL



CARAMEL



WHITE



COLORMIX ARABICA



COLORMIX BRILANT



COLORMIX SAND

Note: BEST COVER PLATE I, II, V offers only colormix colours.

surface	characteristics	colour
STANDARD	standard surface with natural aggregate roughness corresponding to the visible layer of concrete paving	natural, caramel, colormix arabica, colormix brilant, colormix sand

## GENERAL INFORMATION

The cover plate is used to finish the fence construction. We recommend to apply a hydrophobic impregnation to the cover plates after they are fitted, because the cover plates are not waterproof and this minimizes the possibility of moisture penetration into the structure.

The minimum shipping quantity is 1 piece. The goods are loaded on marked pallets BEST (30 kg) or BEST large (38 kg) according to the production capacity of individual plants.

During installation, it is important to follow the correct procedure according to the instructions for use ([www.best.cz](http://www.best.cz)).

All types of cover plates are provided with two drips underside on the longer part.

