

TECHNICAL INFORMATION



| name | layout dimensions (mm) | | | consumption (pcs/m) | quantity (pcs) | | weight (kg) | | | max. tonnage up to 24 tonnes | | note |
|-------------------|------------------------|-----------------|--------|---------------------|----------------|--------|-------------|--------|------------------|------------------------------|-----|---------------------|
| | height | footprint width | length | | layer | pallet | pcs | pallet | including pallet | pcs of pallets | pcs | |
| BEST FALDO | 150 | max. 330 | 1000 | 1 | 2 | 10 | 119 | 1190 | 1220 | 19 | 190 | 1 pallet = 5 layers |

We are holders of the Gold Certificate for complete certification according to ISO 9001, ISO 14001, ISO 50001, ISO 45001. Our products are manufactured and inspected pursuant to European harmonized standards.

| production standard | maximum deviation from declared production dimensions | | bending strength | skid/slip resistance | ČSN 73 1326, weather resistance, method A |
|---------------------|---|--------|------------------|----------------------|---|
| | width and length | height | | | |
| ČSN EN 1339 | ±5 mm | ±5 mm | ≥ 3.5 MPa | satisfactory | ≤ 1.0 kg/m ² after 100 cycles |

EXPLANATIONS OF PICTOGRAMS

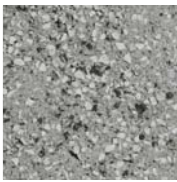


Surface Standard

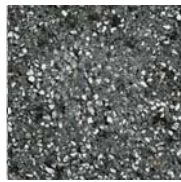


Surface Metropol

SURFACE FINISHES AND COLOURS



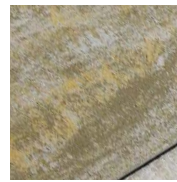
NATURAL



ANTHRACITE



COLORMIX BRILANT



COLORMIX SAND

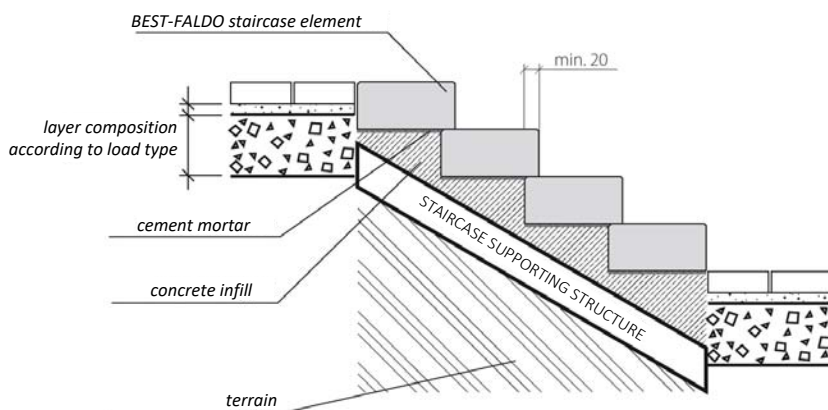
| surface | characteristics | colour |
|----------|---|---------------------------------|
| STANDARD | standard surface with natural aggregate roughness corresponding to the visible layer of concrete paving | colormix sand, colormix brilant |
| METROPOL | blast-treated surface, produced according to a special recipe using coloured grits | natural, anthracite |

GENERAL INFORMATION

Two-layer vibrated element with high strength, frost resistance, surface resistance to water and chemical de-icing agents. The staircase element has low abrasion and good adhesion properties. BEST concrete elements are permanently impregnated against contamination.

The minimum shipping quantity is 1 piece. The goods are loaded on marked pallets BEST (30 kg) or BEST large (38 kg) according to the production capacity of individual plants.

When laying, it is important to follow the correct procedure according to the instructions for use (www.best.cz).



- the steps can be placed in a damp concrete mix or they can be mounted on pre-concreted stair treads fully in the mortar bed 30 mm
- the width of the tread can be selected by the relative position of the fittings
- the joints between the elements are always filled with waterproof and frost-resistant grout installation starts from the bottom

