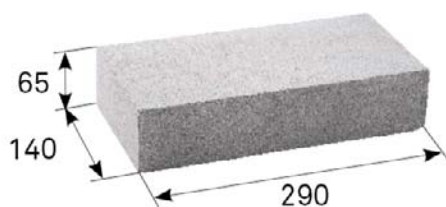




TECHNICAL INFORMATION



name	layout dimensions (mm)			quantity (pcs)		weight (kg)			max. tonnage up to 24 t	
	height	length	width	layer	pallet	pcs	pallet	including pallet	number of pallets	pcs
BEST BRICK	65	290	140	51	255	6	1530	1560	15	3825

name	wall thickness	consumption at 12 mm joint		approx. consumption of mortar
	mm	pcs/lm	pcs/m ²	kg/m ²
BEST BRICK	140	3.31	43.00	23
	290	6.58	85.44	61
	65	3.31	21.78	7

We are holders of the Gold Certificate for complete certification according to ISO 9001, ISO 14001, ISO 50001, ISO 45001. Our products are manufactured and inspected pursuant to European harmonized standards.

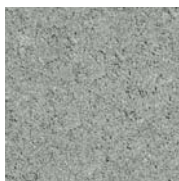
production standard	maximum deviation from declared production dimensions		tensile strength	capillary absorptivity	Frost resistance ČSN 73 1322
	width and length	height			
ČSN EN 771-3+A1	+3/-5 mm	+3/-5 mm	≥ 30 MPa	not more than 7 g/m ² s	50 cycles

EXPLANATIONS OF PICTOGRAMS



Surface basic

SURFACE FINISHES AND COLOURS



NATURAL



RED

surface	characteristics	colour
STANDARD	standard surface with natural aggregate roughness corresponding to the concrete	natural, red

GENERAL INFORMATION

Universal masonry fittings made of plain vibro-pressed concrete with a smooth facing wall. The elements are strong, frost-resistant, waterproof and impregnated against contamination.

The minimum shipping quantity is 1 piece. The goods are loaded on marked pallets BEST (30 kg) or BEST large (38 kg) according to the production capacity of individual plants.

During installation, it is important to follow the correct procedure according to the instructions for use (www.best.cz).

