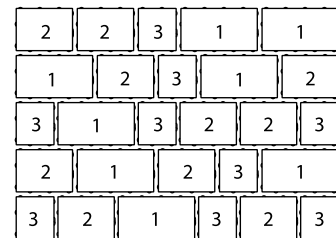
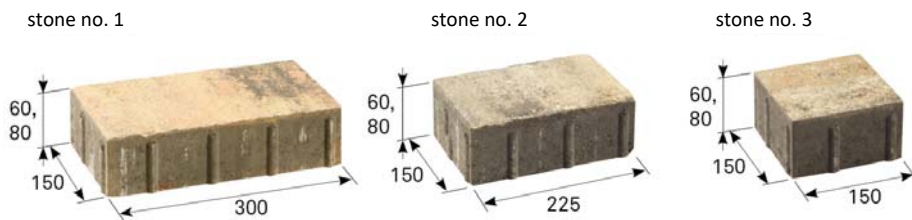


TECHNICAL INFORMATION



Layout dimensions, set of 3 types of stones

Indicative composition of stones on the layer

name		layout dimensions (mm)			indicative number of pieces on the layer	quantity (m ²)		weight (kg)			max. tonnage up to 24 t	
		height	length	width		layer	pallet	layer	pallet	pallet included	pcs of pallets	m ²
BEST BELISIMA 	stone no. 1	60	300	150	8	0.90	9.00	115	1150	1180	20	180.00
	stone no. 2	60	225	150	10							
	stone no. 3	60	150	150	9							
BEST BELISIMA 	stone no. 1	80	300	150	8	0.90	9.00	153	1530	1560	15	135.00
	stone no. 2	80	225	150	10							
	stone no. 3	80	150	150	9							

name		layout dimensions (mm)			indicative number of pieces on the layer	quantity (m ²)		weight (kg)			max. tonnage up to 24 t	
		height	length	width		layer	pallet	layer	pallet	pallet included	pcs of pallets	m ²
BEST BELISIMA 	stone no. 1	60	300	150	8	0.90	9.00	115	1150	1180	20	180.00
	stone no. 2	60	225	150	10							
	stone no. 3	60	150	150	9							
BEST BELISIMA 	stone no. 1	80	300	150	8	0.90	9.00	153	1530	1560	15	135.00
	stone no. 2	80	225	150	10							
	stone no. 3	80	150	150	9							

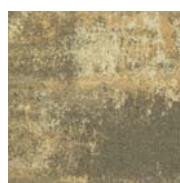
We are holders of the Gold Certificate for complete certification according to ISO 9001, ISO 14001, ISO 50001, ISO 45001. Our products are manufactured and inspected pursuant to European harmonized standards.

EXPLANATIONS OF PICTOGRAMS

	Paving designed for sidewalks, bicycle paths and non-motorized traffic.		Surface basic		Surface ULTRA UV		Surface Antico
	Paving intended for sidewalks, bicycle paths, parking spaces and movement of motor vehicles up to 3.5 t with occasional movement over 3.5 t (garbage trucks, supply).		Surface VELVET UV		Facet mini		

product height	production standard	maximum deviation from declared production dimensions		deviations from flatness and curvature			transverse tensile strength	bending strength	skid/slip resistance	ČSN 73 1326, weather resistance, method A
		width and length	height	length of gauge	max. convexity	max. concavity				
60 mm	ČSN EN 1338	±2 mm	±3 mm				≥ 3.6 MPa		≥ 40	≤ 1.0 kg/m ² after 100 cycles
80 mm	ČSN EN 1338	±2 mm	±3 mm				≥ 3.6 MPa		≥ 40	≤ 1.0 kg/m ² after 100 cycles
60 mm (stone no. 1)	ČSN EN 1339	±2 mm	±3 mm	500 mm	2.5 mm	1.5 mm		≥ 5 MPa	≥ 40	≤ 1.0 kg/m ² after 100 cycles

SURFACE FINISHES AND COLOURS



COLORMIX ARABICA



COLORMIX SAND



COLORMIX ETNA



COLORMIX BRILANT



COLORMIX MOKA

surface	characteristics	colour
STANDARD	standard surface with natural aggregate roughness corresponding to the visible layer of concrete paving	colormix arabica, sand, etna, brilant, moka
VELVET UV	smoothed surface with polyurethane coating, which creates a protective film on the surface of the paving by means of UV radiation	colormix arabica, sand, etna, brilant, moka
ULTRA UV	the specially treated surface is coated in several layers with a protective polyurethane coating, which is activated by UV radiation to form a protective film	colormix arabica, sand, etna, brilant, moka
ANTICO	standard surface irregularly roughened with irregularly chamfered edges, polished with varnish and UV cured	colormix arabica, sand, etna, brilant, moka

GENERAL INFORMATION

Two-layer vibrated paving with high strength, frost resistance, surface resistance to water and chemical de-icing agents. The paving has low abrasion and good adhesion properties. BEST concrete elements are permanently impregnated against contamination.

The minimum shipping quantity is 1 layer; the stones cannot be delivered individually and it is not possible to determine the ratio of stones in the composition. The goods are loaded on marked pallets BEST (30 kg) or BEST large (38 kg) according to the production capacity of individual plants.

When laying, it is important to follow the correct procedure according to the instructions for use (www.best.cz).

Caution: BEST BELISIMA paving with a height of 60 mm is not recommended to be compacted with a vibrating plate; the paving with a height of 80 mm must be compacted with a vibrating plate with a plastic pad weighing no more than 100-130 kg with a set centrifugal force of 18-20 kN.

